



GAT MONTHLY MEMBERSHIP PROGRESS REPORT

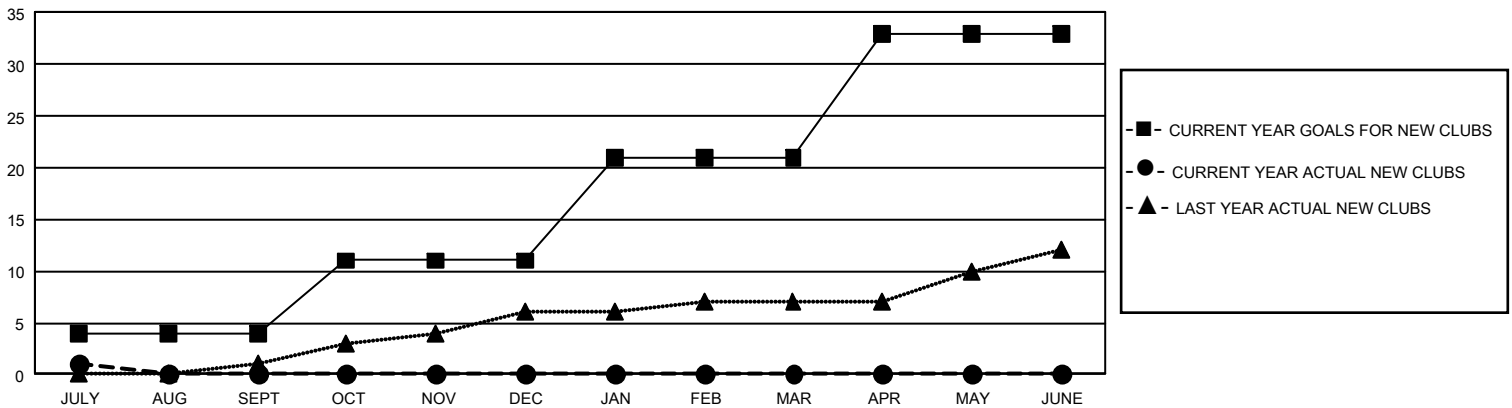
Results as of: 7/31/2021

GMT Constitutional Area 1, Group F

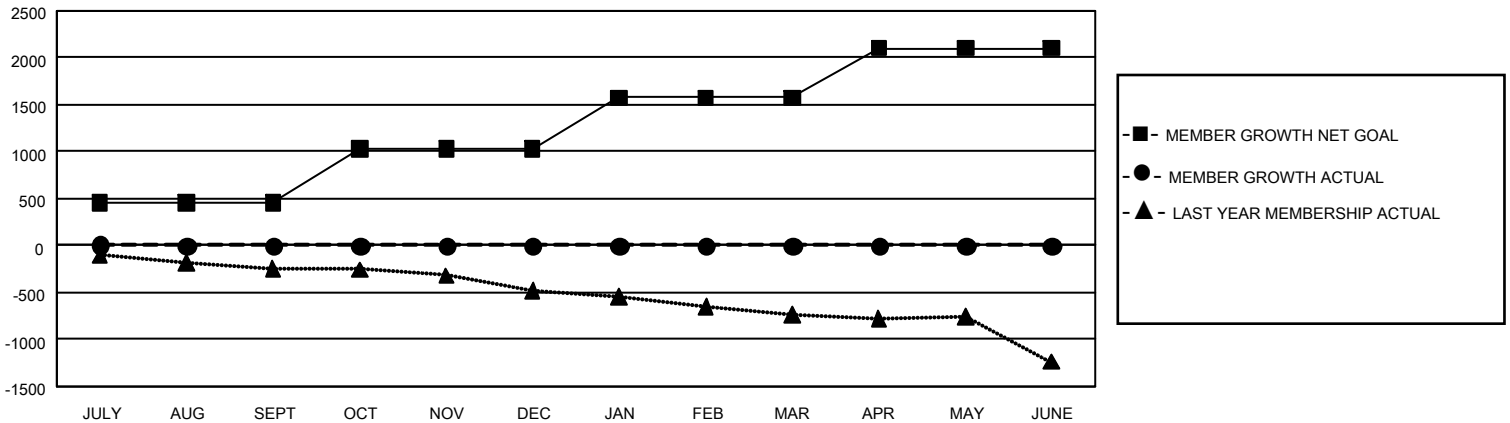
REPORT DOES NOT INCLUDE CLUBS IN UNDISTRICTED AREAS.

Clubs				Members			
RESULTS FOR 2021-2022				RESULTS FOR 2021-2022			
QUARTER	NEW CLUB GOAL	NEW CLUBS	DROPPED CLUBS	QUARTER	MEMBER GROWTH NET GOAL	MEMBER GROWTH ACTUAL	DROPPED MEMBERS ACTUAL (including transfers)
JULY/AUG/SEPT	12	1	3	JULY/AUG/SEPT	451	242	197
OCT/NOV/DEC	21	0	0	OCT/NOV/DEC	576	0	0
JAN/FEB/MAR	30	0	0	JAN/FEB/MAR	550	0	0
APR/MAY/JUNE	36	0	0	APR/MAY/JUNE	528	0	0

GOALS AND ACTUAL NEW CLUBS CUMULATIVE



GOALS AND ACTUAL MEMBERS CUMULATIVE



DROPPED CLUBS: 3

81 CLUBS OF 876 ADDED 1 OR MORE NEW MEMBERS

GENDER DISTRIBUTION

MALE 14,315 (61.73%)
FEMALE 8,873 (38.27%)

DROPPED MEMBERS

DECEASED	27
CLUB CANCELLED	0
OTHER	172
TOTAL	199

[CLICK HERE FOR CUMULATIVE MEMBERSHIP DATA](#)

TOTAL FAMILY UNIT MEMBERS 4,139

FAMILY MEMBERS PAYING HALF DUES 2,153